

Austin-Bergstrom International Airport

Aviation Activity Report

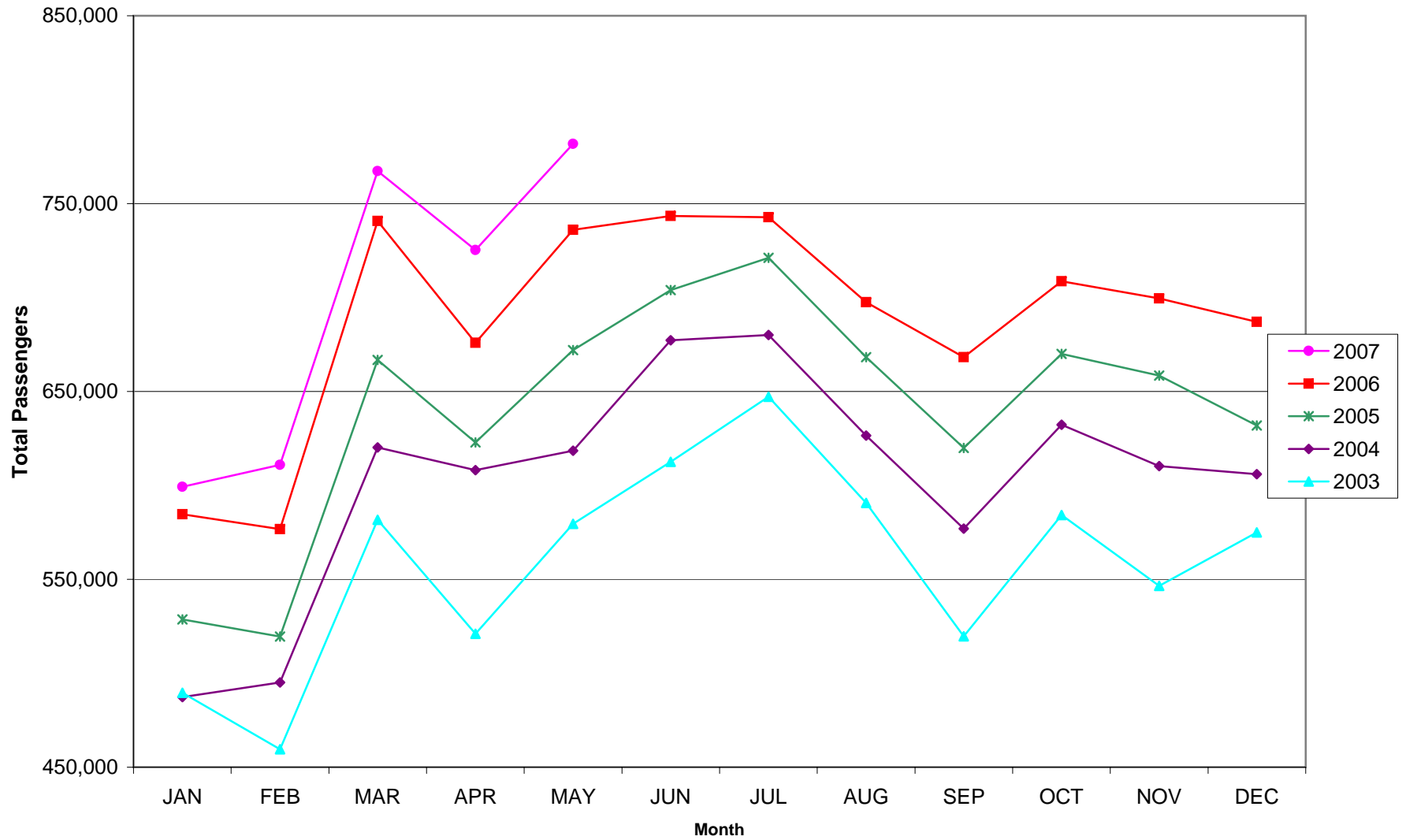
	05/2007	05/2006	Percent Change	01/2007 - 05/2007	01/2006 - 05/2006	Percent Change
<u>Passenger Activity</u>						
Domestic Enplaned Revenue	379,136	360,277	5.23	1,654,899	1,579,603	4.77
Domestic Deplaned Revenue	364,078	343,625	5.95	1,653,003	1,583,235	4.41
Domestic Through Revenue	18,830	13,009	44.75	84,726	65,299	29.75
International Enplaned Revenue	925	566	63.43	3,750	724	417.96
International Deplaned Revenue	827	441	87.53	3,782	441	757.60
International Through Revenue	0	0	0.00	0	0	0.00
Domestic Enplaned Non-Revenue	9,113	9,339	-2.42	43,112	43,879	-1.75
Domestic Deplaned Non-Revenue	8,946	8,750	2.24	41,532	40,720	1.99
Domestic Through Non-Revenue	0	0	0.00	0	0	0.00
International Enplaned Non-Revenue	0	0	0.00	0	0	0.00
International Deplaned Non-Revenue	0	0	0.00	0	0	0.00
International Through Non-Revenue	0	0	0.00	0	0	0.00
Passenger Totals	781,855	736,007	6.23	3,484,804	3,313,901	5.16
CURRENT PASSENGER RECORD =	767,364				RECORD SET = MARCH 2007	
<u>Aircraft Operations</u>						
Air Carrier	8,895	8,379	6.16	40,621	39,449	2.97
Commuter & Air Taxi	2,623	2,118	23.84	10,612	10,307	2.96
Military	527	463	13.82	2,631	2,678	-1.76
General Aviation						
Itinerant	5,980	6,682	-10.51	28,855	31,405	-8.12
Local	528	470	12.34	1,697	1,714	-0.99
Total G.A.	6,508	7,152	-9.00	30,552	33,119	-7.75
Total Operations	18,553	18,112	2.43	84,416	85,553	-1.33
<u>Cargo Activity</u>						
Belly Freight						
Domestic Enplaned Belly Freight	1,212,093	978,796	23.84	6,096,310	4,815,967	26.59
Domestic Deplaned Belly Freight	712,857	862,908	-17.39	3,722,675	4,075,169	-8.65
International Enplaned Belly Freight	0	0	0.00	0	0	0.00
International Deplaned Belly Freight	0	0	0.00	0	0	0.00
Belly Freight Totals	1,924,950	1,841,704	4.52	9,818,985	8,891,136	10.44
Mail						
Domestic Enplaned Mail	137,576	223,286	-38.39	737,628	1,235,611	-40.30
Domestic Deplaned Mail	226,916	385,561	-41.15	1,564,606	2,172,596	-27.98
International Enplaned Mail	0	0	0.00	15	0	0.00
International Deplaned Mail	0	0	0.00	15	0	0.00
Mail Totals	364,492	608,847	-40.13	2,302,264	3,408,207	-32.45
Cargo						
Domestic Enplaned Cargo	8,539,045	8,957,964	-4.68	36,033,981	41,701,594	-13.59
Domestic Deplaned Cargo	7,252,003	7,591,036	-4.47	32,247,246	37,222,370	-13.37
International Enplaned Cargo	456,113	386,976	17.87	2,069,164	1,834,485	12.79
International Deplaned Cargo	0	0	0.00	0	0	0.00
Cargo Totals	16,247,161	16,935,976	-4.07	70,350,391	80,758,449	-12.89
Cargo Totals (Belly Freight, Mail, Cargo)	18,536,603	19,386,527	-4.38	82,471,640	93,057,792	-11.38
CURRENT CARGO RECORD =	40,215,518				RECORD SET = MARCH 2001	

AUS – Airline Codes

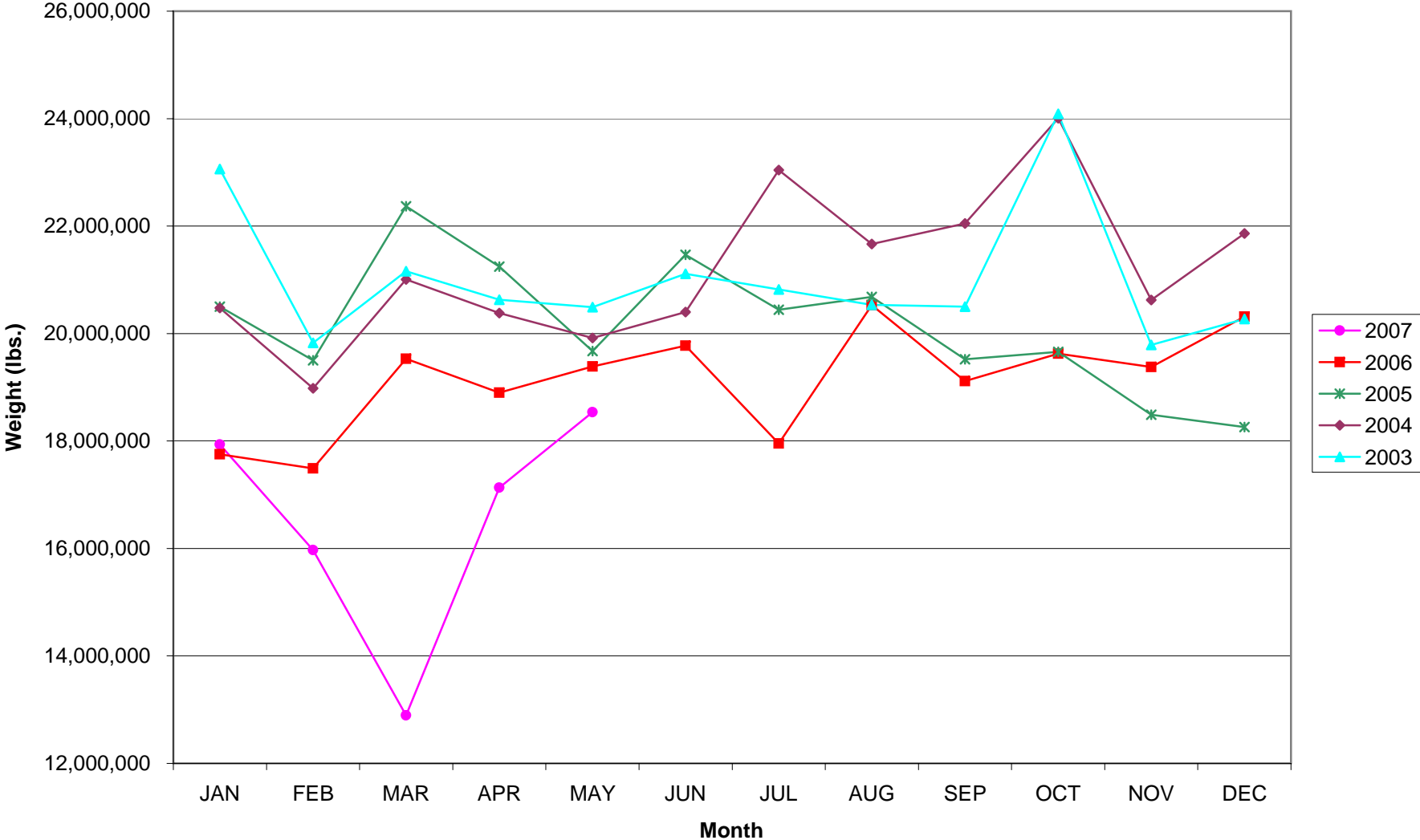
April 2007

<u>Code</u>	<u>Carrier</u>
AM	Aero Mexico/Aerovias de Mexico S.A.
AA	American Airlines
EV	Atlantic Southeast Airlines (Delta Connection)
CO	Continental Airlines
DL	Delta Airlines
XJ	Express Jet
F9	Frontier Airlines
B6	JetBlue Airways
YV	Mesa Airlines
NW	Northwest Airlines
9E	Pinnacle Airlines/dba Northwest Airlink
S5	Shuttle America (Delta Connection)
OO	SkyWest Airlines
WN	Southwest Airlines
UA	United Airlines
US	US Airways Group

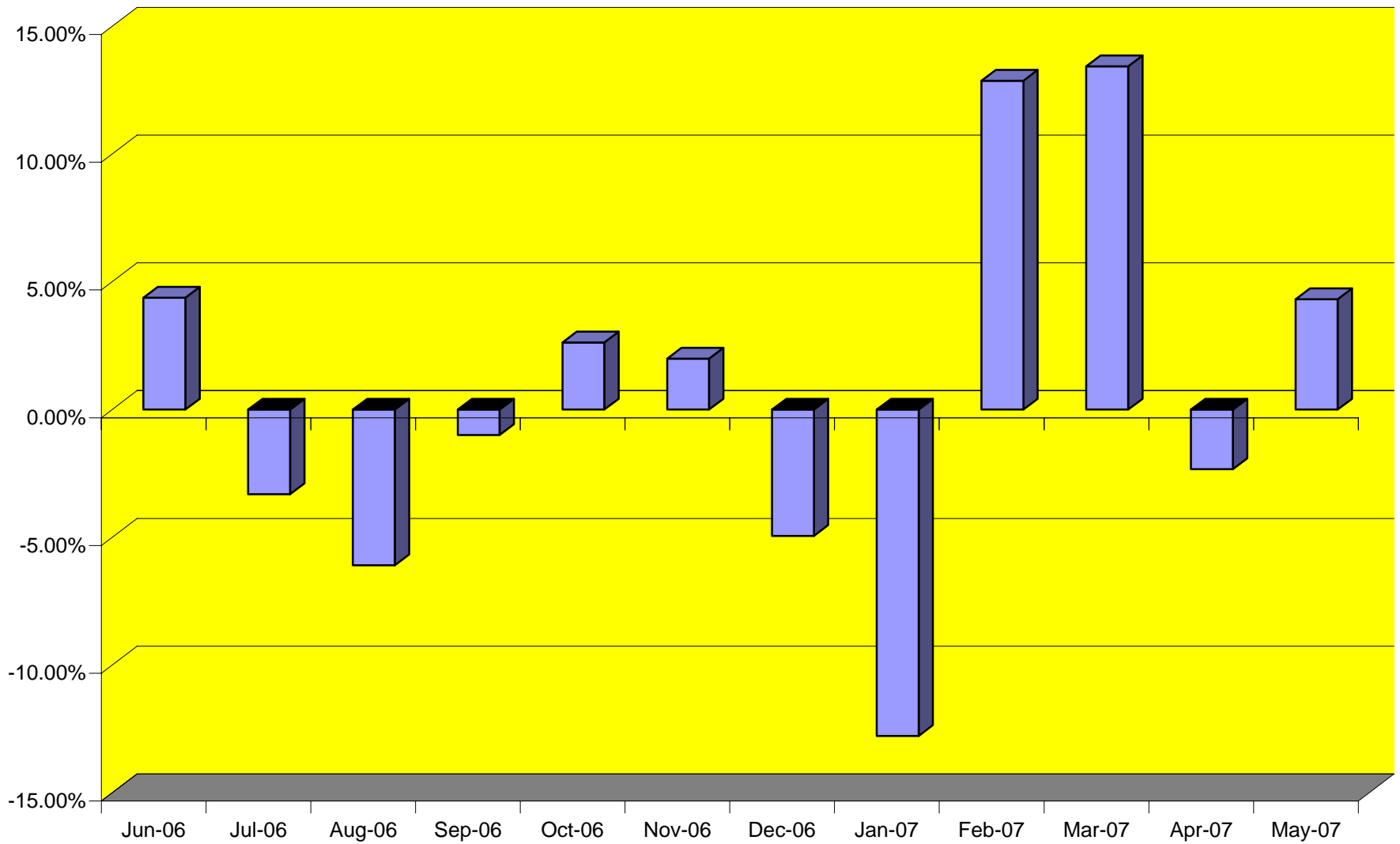
AUSTIN PASSENGER TRAFFIC



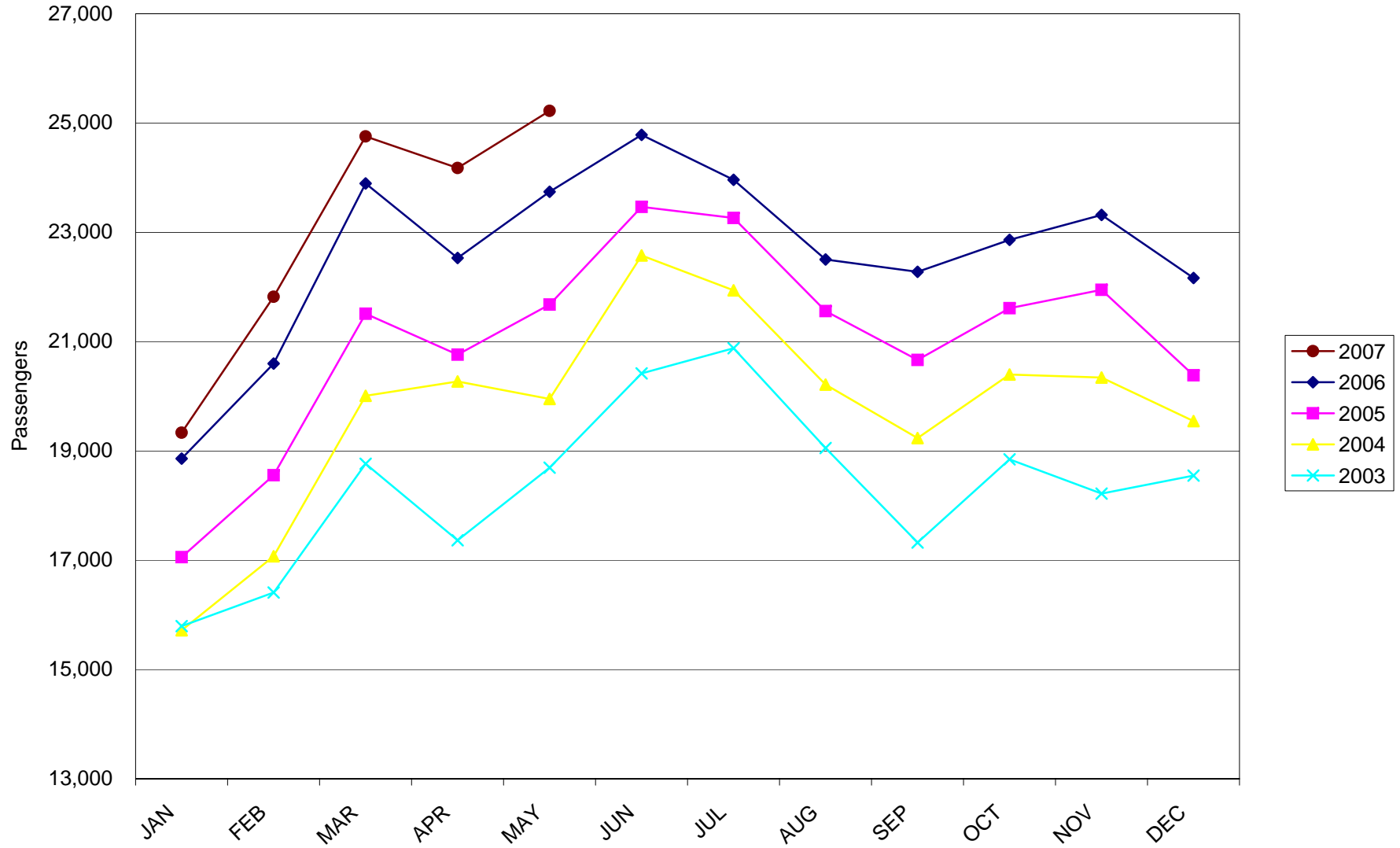
TOTAL CARGO POUNDAGE - AUSTIN, TEXAS



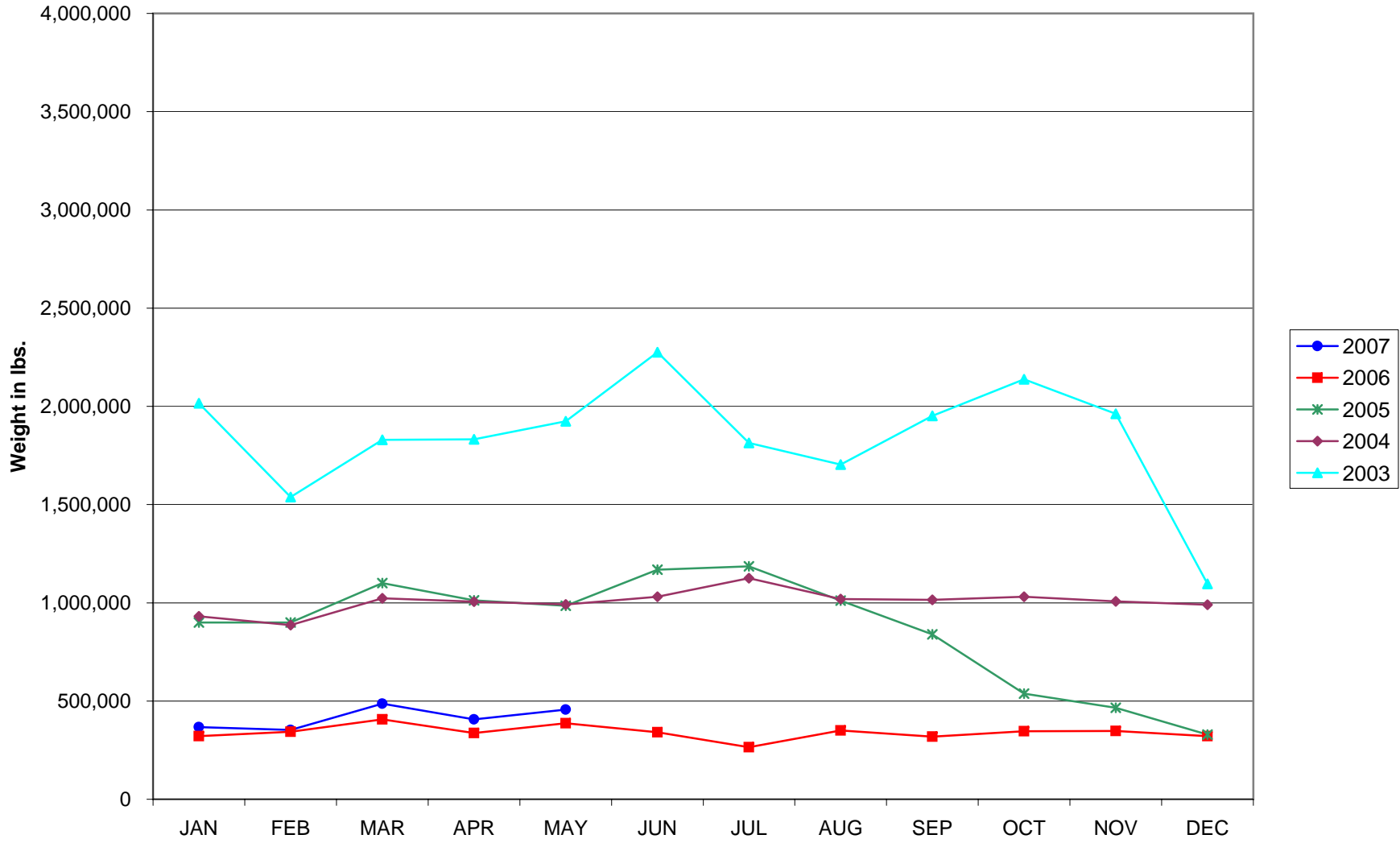
Monthly % Change in Average Daily Passengers



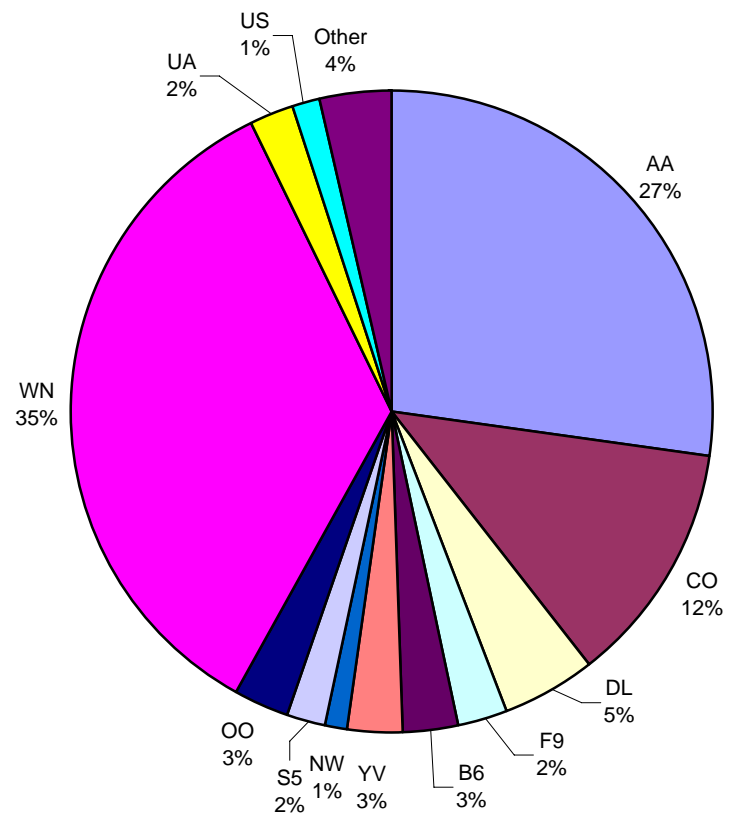
Average Daily Passengers



History of International Air Cargo



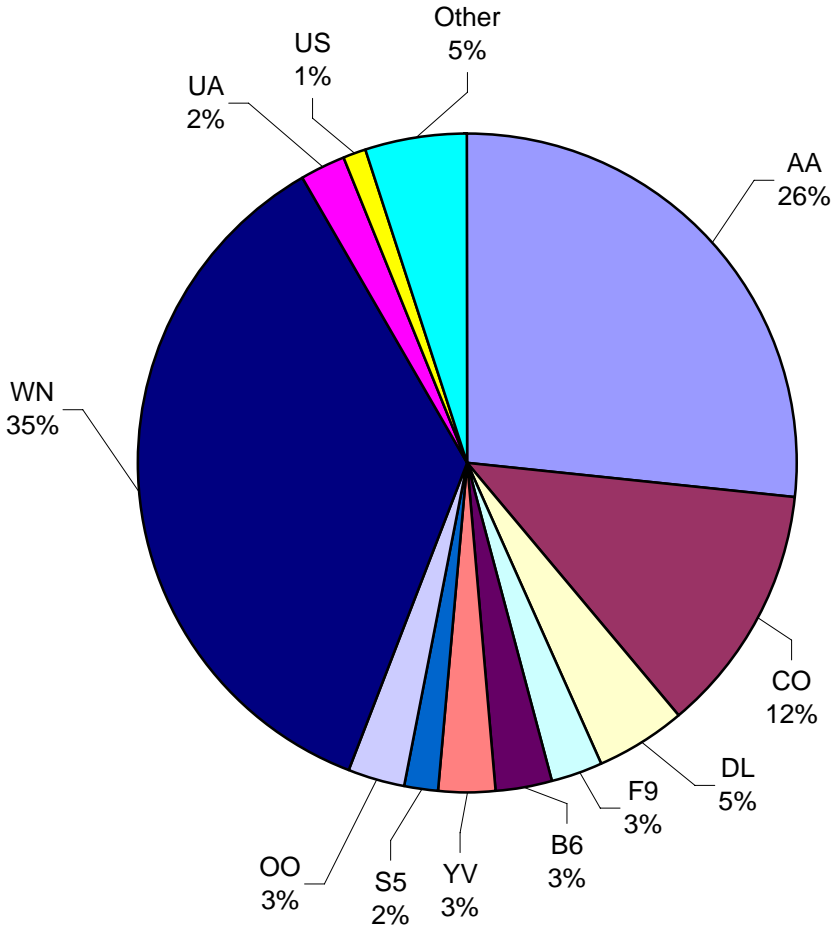
**All Carriers
Total Passengers
May 2007**



Other = AM, G4, EV, XJ, and 9E

Note: United Airlines percentage includes sub-contractors.

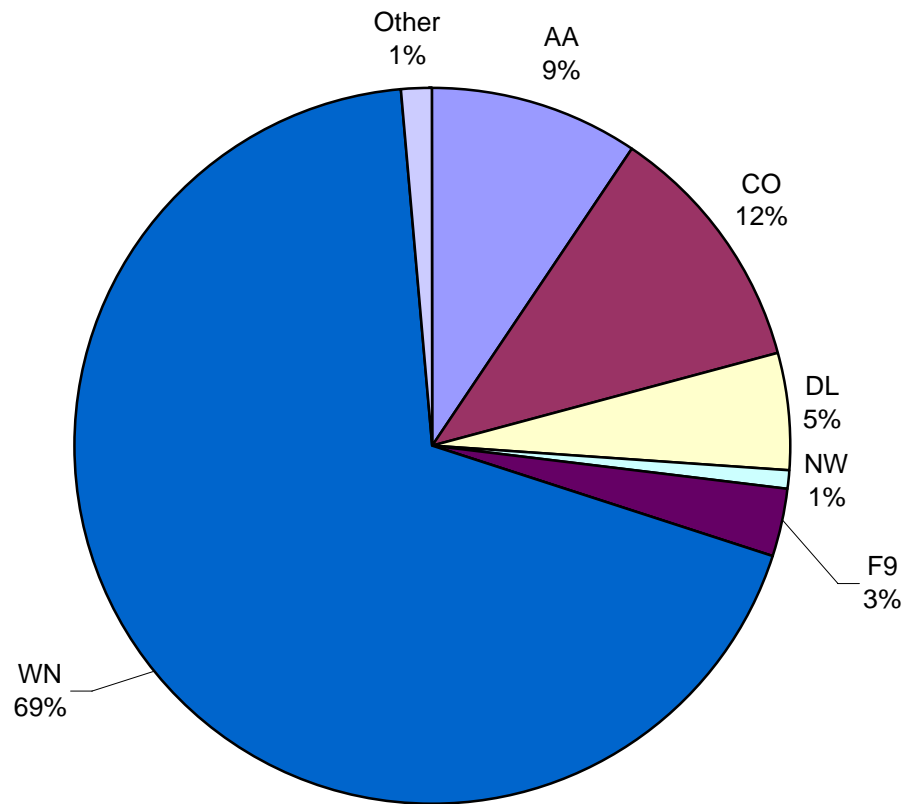
**Signatory Passenger Carriers
Enplaned Revenue Passengers
May 2007**



Other = AM, EV, XJ, NW, and 9E

Note: United Airlines percentage includes sub-contractors.

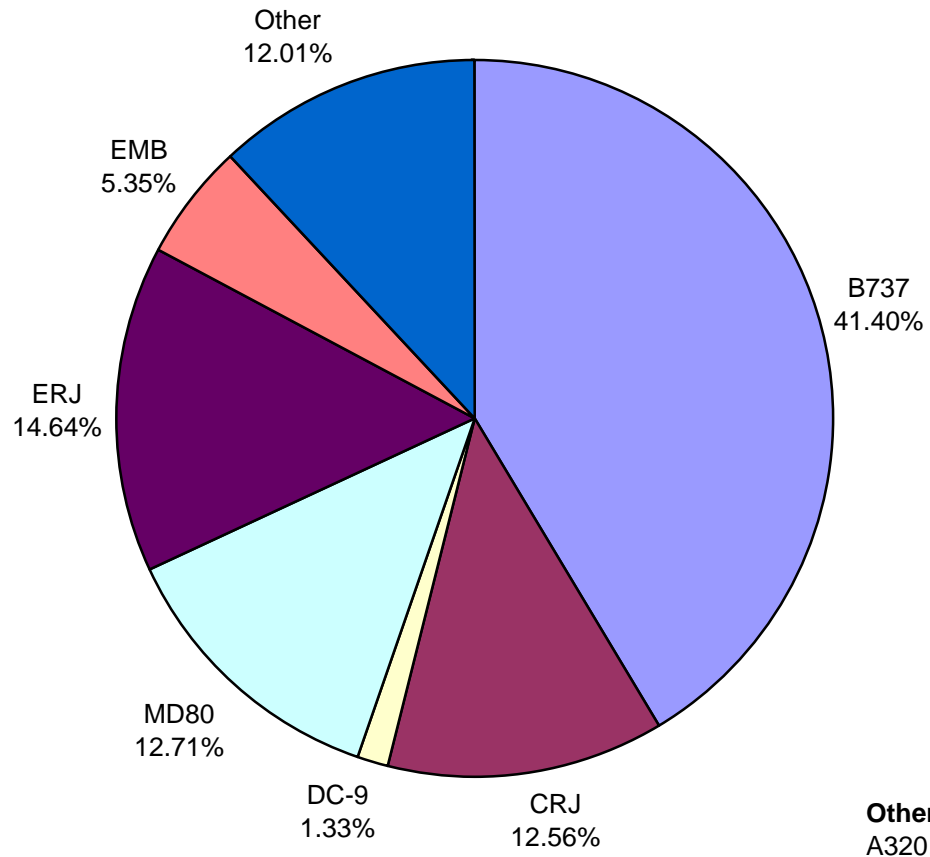
AUS Belly Freight Market Shares May 2007



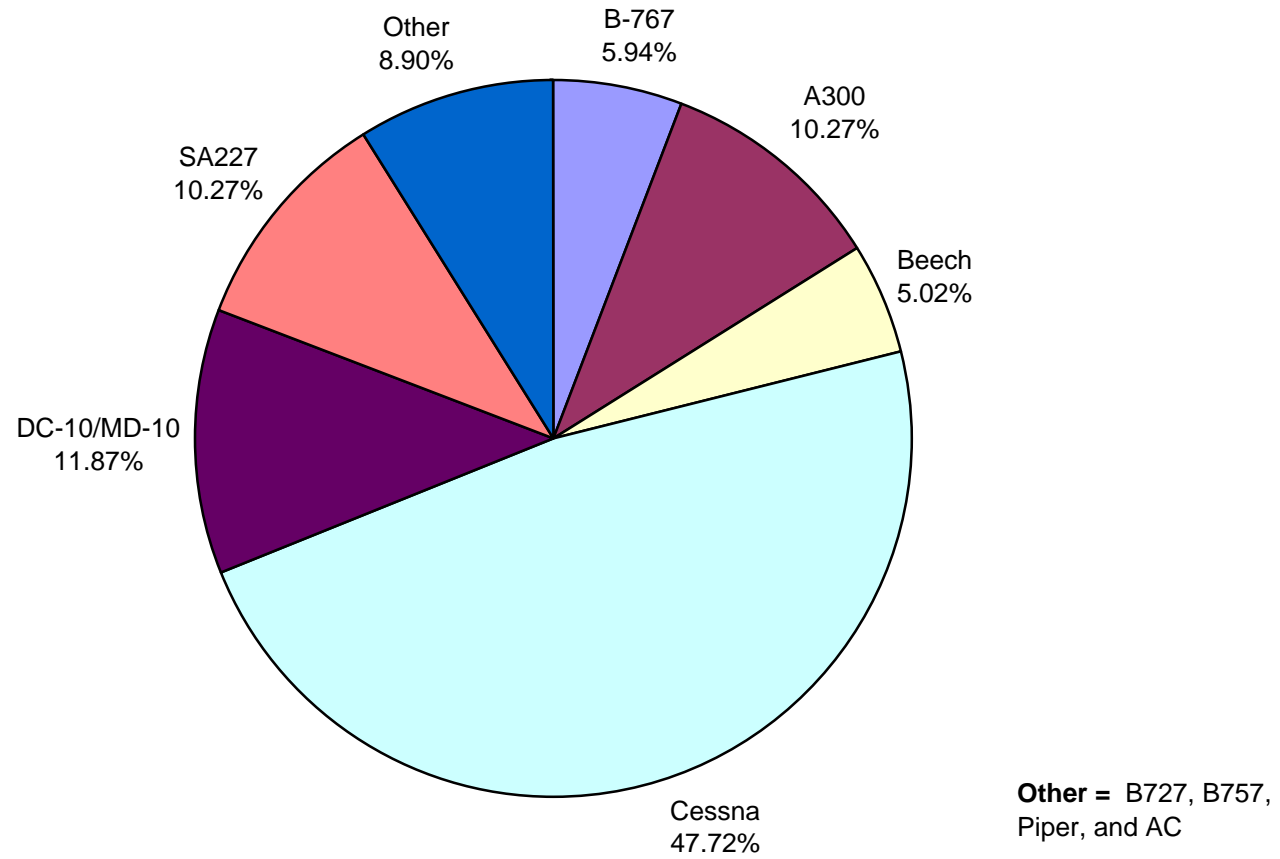
Other = Atlantic Southeast, Mesa, Pinnacle, Sky West, and US Airways

Note: United Airlines percentage includes sub-contractors.

**AUS Scheduled Aircraft Fleet Mix
May 2007**



AUS Scheduled Cargo Aircraft Fleet Mix May 2007



Austin-Bergstrom International Airport

PAX Detail Report - May, 2007

Company	05/2007	05/2006	Period		YTD 2007	YTD 2006	YTD		2007 Share	2006 Share	Share Diff
			Difference	Change			Difference	Change			
Aero Mexico Airlines/Aerovias de Mexico, S.A. de C.V.	1,752	371	1,381	372.2	7,532	371	7,161	1,930.2	0.2	0.0	0.2
Allegiant Air	275	0	275	0.0	324	256	68	26.6	0.0	0.0	0.0
American Airlines, Inc	213,757	198,964	14,793	7.4	927,562	897,006	30,556	3.4	26.6	27.1	-0.5
Atlantic Southeast Airlines, Inc.	3,809	9,541	-5,732	-60.1	18,036	17,418	618	3.5	0.5	0.5	0.0
Casino Express Airways	0	290	-290	-100.0	297	1,371	-1,074	-78.3	0.0	0.0	0.0
Chautauqua Airlines Inc.	0	0	0	0.0	68	0	68	0.0	0.0	0.0	0.0
Continental Airlines	95,237	87,024	8,213	9.4	423,764	407,164	16,600	4.1	12.2	12.3	-0.1
Delta Air Lines, Inc. DIP	36,319	30,772	5,547	18.0	172,226	164,658	7,568	4.6	4.9	5.0	0.0
Express Jet Airlines, Inc.	12,064	0	12,064	0.0	14,877	0	14,877	0.0	0.4	0.0	0.4
Frontier Airlines, Inc.	19,533	15,888	3,645	22.9	82,032	69,391	12,641	18.2	2.4	2.1	0.3
Grand Holdings, Inc DBA Champion Air	0	0	0	0.0	412	655	-243	-37.1	0.0	0.0	0.0
JetBlue Airways Corporation	21,807	19,554	2,253	11.5	91,757	86,615	5,142	5.9	2.6	2.6	0.0
Mesa Airlines Inc.	21,471	32,862	-11,391	-34.7	98,891	133,896	-35,005	-26.1	2.8	4.0	-1.2
Miami Air International Inc.	0	718	-718	-100.0	334	1,007	-673	-66.8	0.0	0.0	0.0
Midwest Express Airlines	0	0	0	0.0	0	125	-125	-100.0	0.0	0.0	0.0
Northwest Airlines, DIP	9,950	9,845	105	1.1	55,568	43,538	12,030	27.6	1.6	1.3	0.3
Pinnacle Airlines, Inc. dba Northwest Airlink	11,192	11,174	18	0.2	44,440	50,273	-5,833	-11.6	1.3	1.5	-0.2
Shuttle America Corporation	14,271	5,012	9,259	184.7	88,534	36,430	52,104	143.0	2.5	1.1	1.4
SkyWest Airlines, Inc	22,232	19,834	2,398	12.1	77,849	95,169	-17,320	-18.2	2.2	2.9	-0.6
Southwest Airlines	270,068	261,393	8,675	3.3	1,209,594	1,167,878	41,716	3.6	34.7	35.2	-0.5
Trans States Airlines, Inc	0	7,175	-7,175	-100.0	20,439	31,864	-11,425	-35.9	0.6	1.0	-0.4
United Airlines, Inc.	17,443	18,722	-1,279	-6.8	84,305	62,964	21,341	33.9	2.4	1.9	0.5
US Airways Group, Inc.	10,675	6,868	3,807	55.4	65,963	45,609	20,354	44.6	1.9	1.4	0.5
USA Jet Airlines, Inc.	0	0	0	0.0	0	243	-243	-100.0	0.0	0.0	0.0
Report Totals	781,855	736,007	45,848	6.2%	3,484,804	3,313,901	170,903	5.2%			

Statistics Included in Report:

Domestic Passengers:

Enplaned Revenue, Deplaned Revenue, Through Revenue, Enplaned Non-Revenue, Deplaned Non-Revenue, Through Non-Revenue

International Passenger:

Enplaned Revenue, Deplaned Revenue, Through Revenue, Enplaned Non-Revenue, Deplaned Non-Revenue, Through Non-Revenue

Austin-Bergstrom International Airport

Summary Landing Report

Landing Type: Total

Month	2007		2006		2005		% Change 2007 - 2006		% Change 2006 - 2005	
	Count	Weight	Count	Weight	Count	Weight	Count	Weight	Count	Weight
January	4,269	461,169,144	4,315	454,283,479	4,480	465,494,653	-1.07%	1.52%	-3.68%	-2.41%
February	4,084	433,092,352	4,039	431,045,336	4,143	435,358,869	1.11%	0.47%	-2.51%	-0.99%
March	4,693	498,304,509	4,753	489,791,305	4,702	490,101,850	-1.26%	1.74%	1.08%	-0.06%
April	4,659	485,924,900	4,515	460,181,145	4,516	479,376,698	3.19%	5.59%	-0.02%	-4.00%
May	5,116	524,923,078	4,701	488,777,890	4,598	489,058,419	8.83%	7.40%	2.24%	-0.06%
June			4,603	473,474,518	4,660	490,954,113			-1.22%	-3.56%
July			4,600	474,488,279	4,776	507,389,575			-3.69%	-6.48%
August			4,700	487,717,207	4,823	512,023,368			-2.55%	-4.75%
September			4,465	468,401,170	4,383	470,987,082			1.87%	-0.55%
October			4,744	495,772,214	4,434	473,018,116			6.99%	4.81%
November			4,494	476,125,637	4,343	463,383,504			3.48%	2.75%
December			4,598	484,969,931	4,360	450,792,799			5.46%	7.58%
Totals for Selected Period	22,821	2,403,413,983	22,323	2,324,079,155	22,439	2,359,390,489	2.23%	3.41%	-0.52%	-1.50%
Yearly Totals	22,821	2,403,413,983	54,527	5,685,028,111	54,218	5,727,939,046			0.57%	-0.75%