

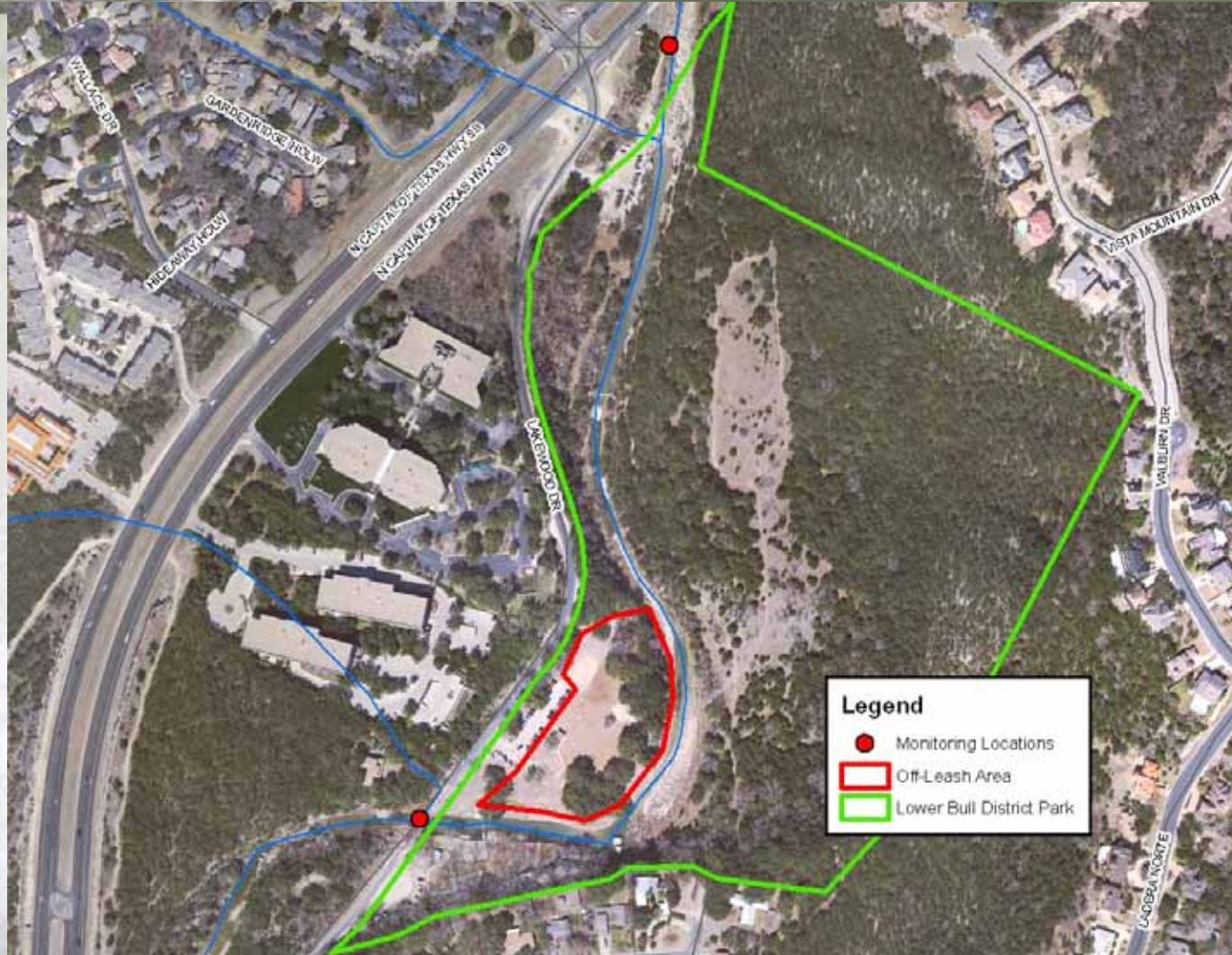
Contact Recreation in Bull Creek District Park



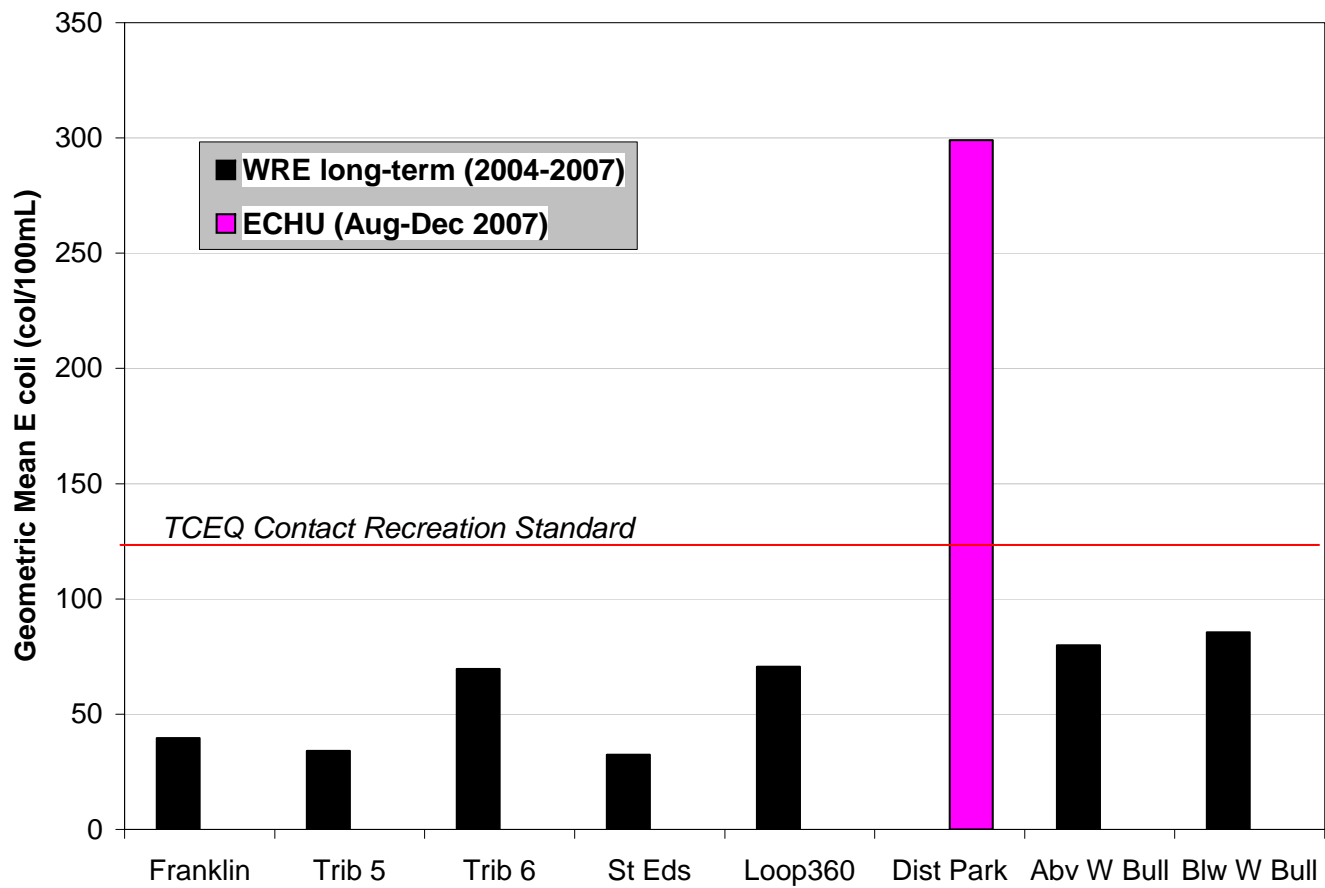
Watershed Protection and
Development Review Department



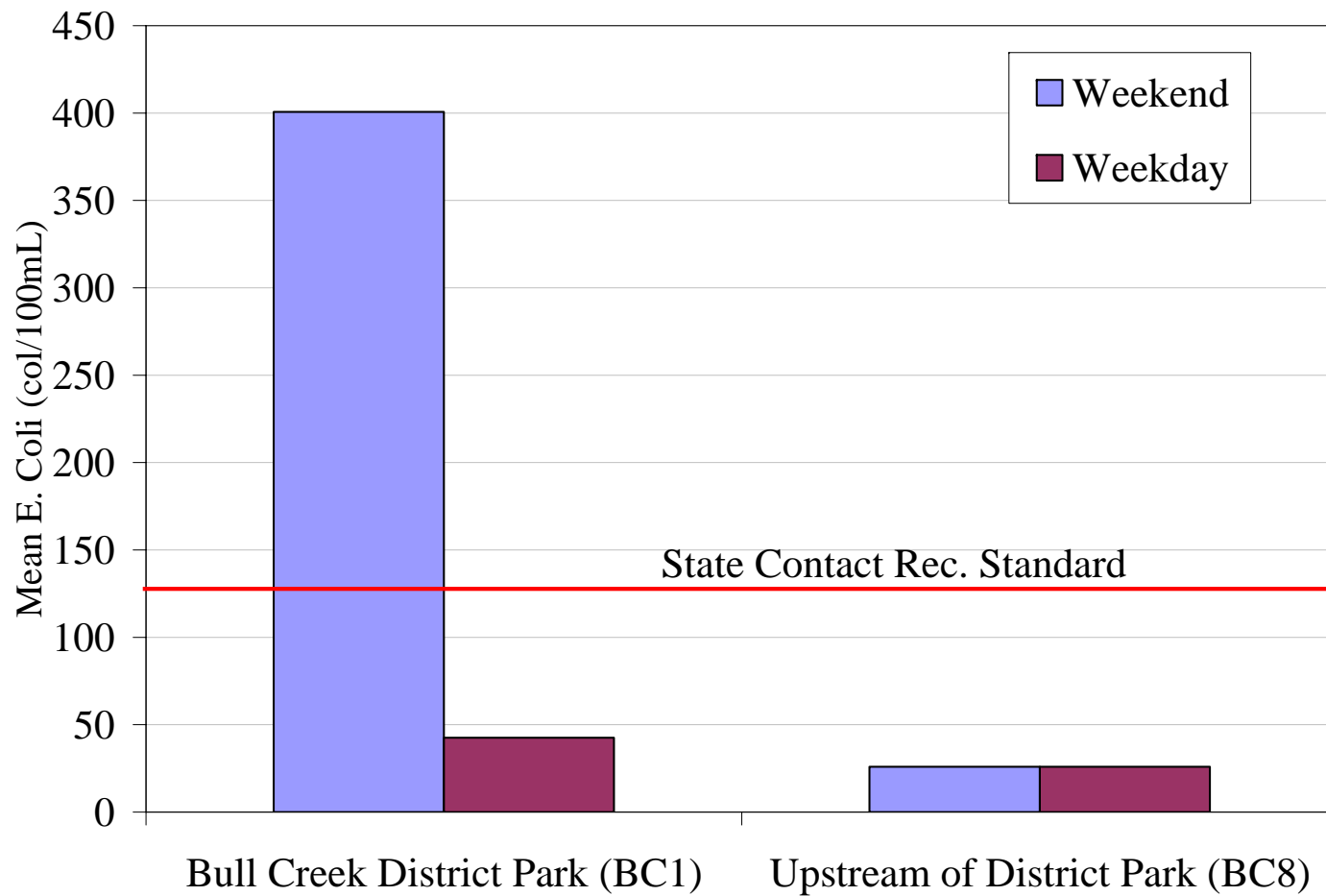
Bull Creek District Park



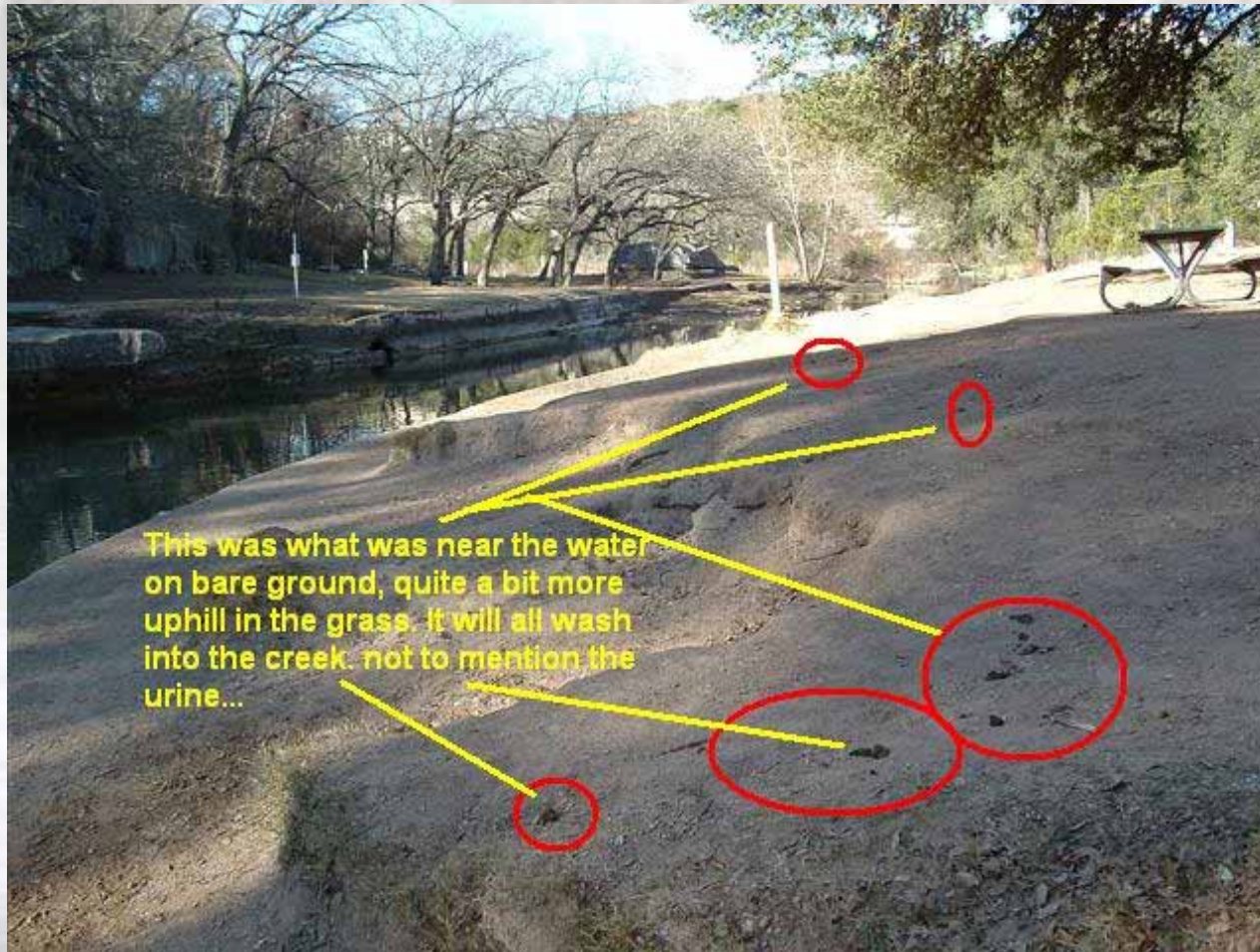
Bacteria in Park



Park Use Most Probable Source




Dog Waste in Park



Public Education


Fecal Bacteria Machine



The ingredients of dog waste are harmful to children.

**Scoop the poop, bag it,
and place it in the trash**

Clean Yards. Clean Creeks. Clean Shoes!
www.scoopthepoopAustin.org

 **Watershed Protection
Development Review**
Adapted from Snohomish County, Washington

Dogs can't flush.



Approximately **5,450 lbs. of dog waste** are deposited on the Bull Creek watershed **every day.**

**Scoop the poop, bag it,
and place it in the trash**

Clean Yards. Clean Creeks. Clean Shoes. Clean Paws!

 www.SCOOPthePOOPAustin.org
Adapted from Snohomish County, Washington

**It's in the grass. It's on my paws.
It's in the creek. It's everywhere!**



Roundworms, E. coli, and Giardia are harmful organisms that can be transmitted from pet waste to people.

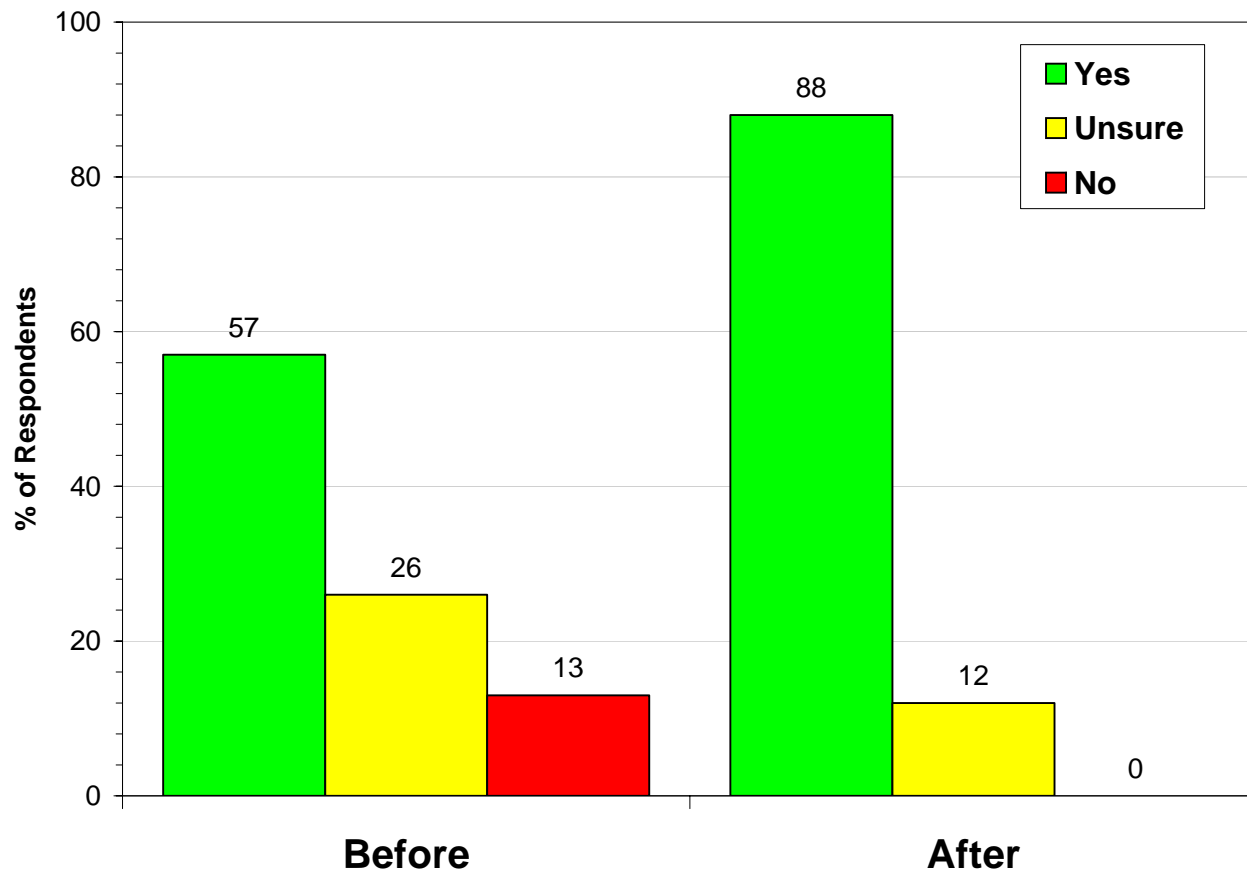
**Scoop the poop, bag it,
and place it in the trash**

Clean Yards. Clean Creeks. Clean Shoes. Clean Paws!

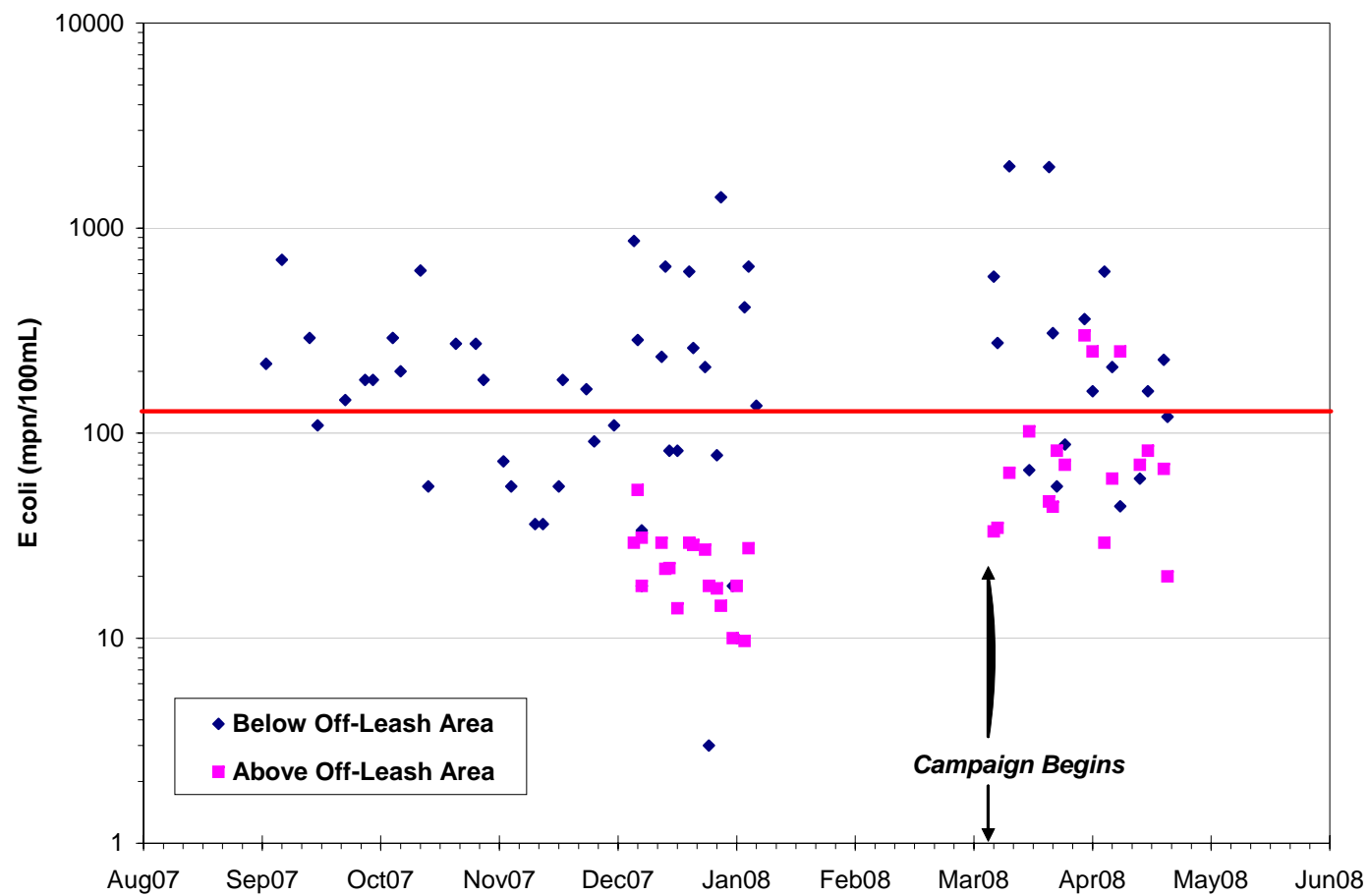
 www.SCOOPthePOOPAustin.org
Adapted from Snohomish County, Washington

Education Results

Do you think pet waste left on the ground pollutes local waterways?

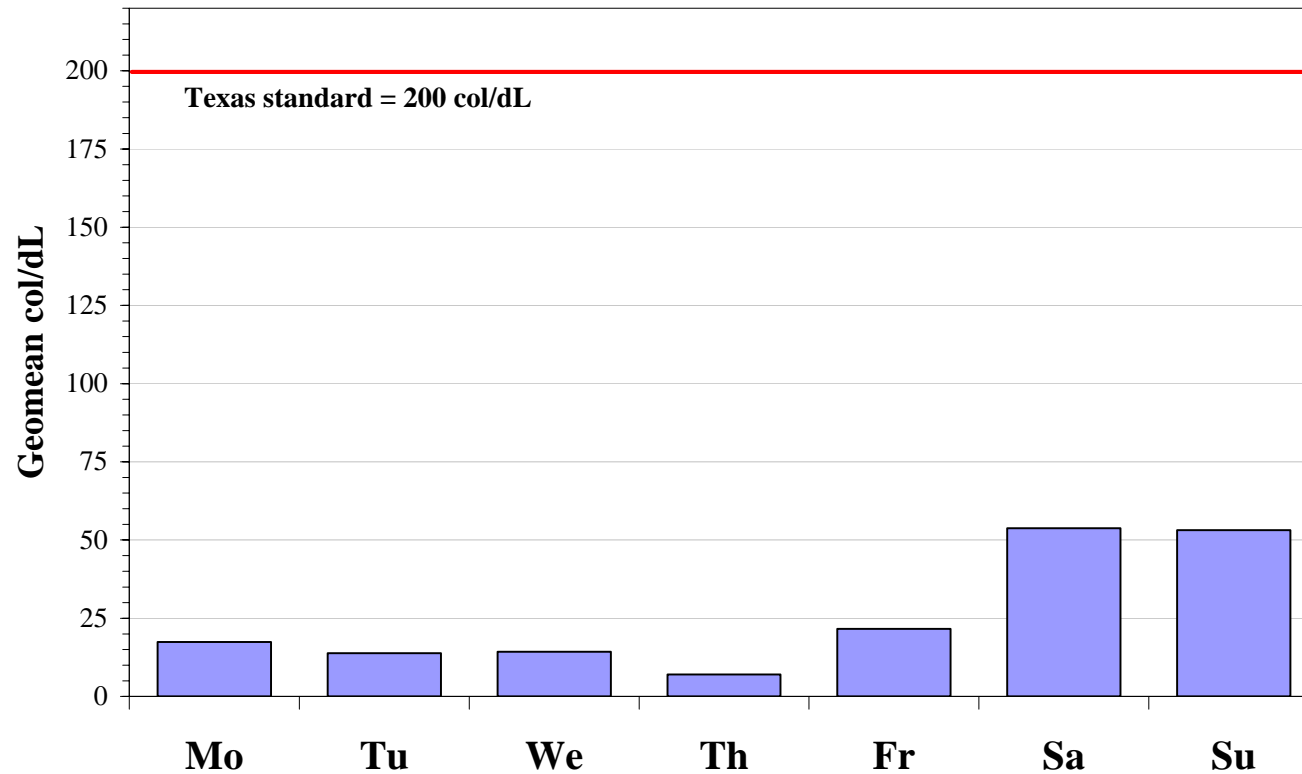


Water Quality Results



Human Use Not Always a Contact Recreation Problem

Barton Springs fecal coliform geometric mean by weekday



Everybody Poops!

