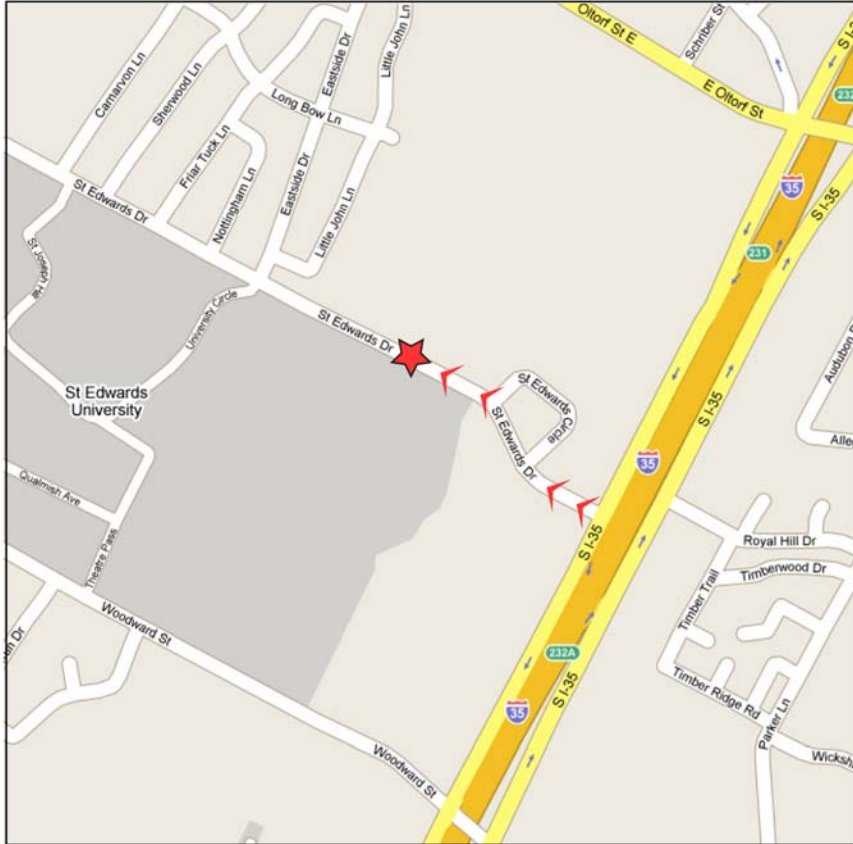


CLEAN CREEK CAMP DIRECTIONS July 19-22, 2010: Session B: Watershed

Day 1: Blunn Creek Nature Preserve, 1101 St. Edwards Dr



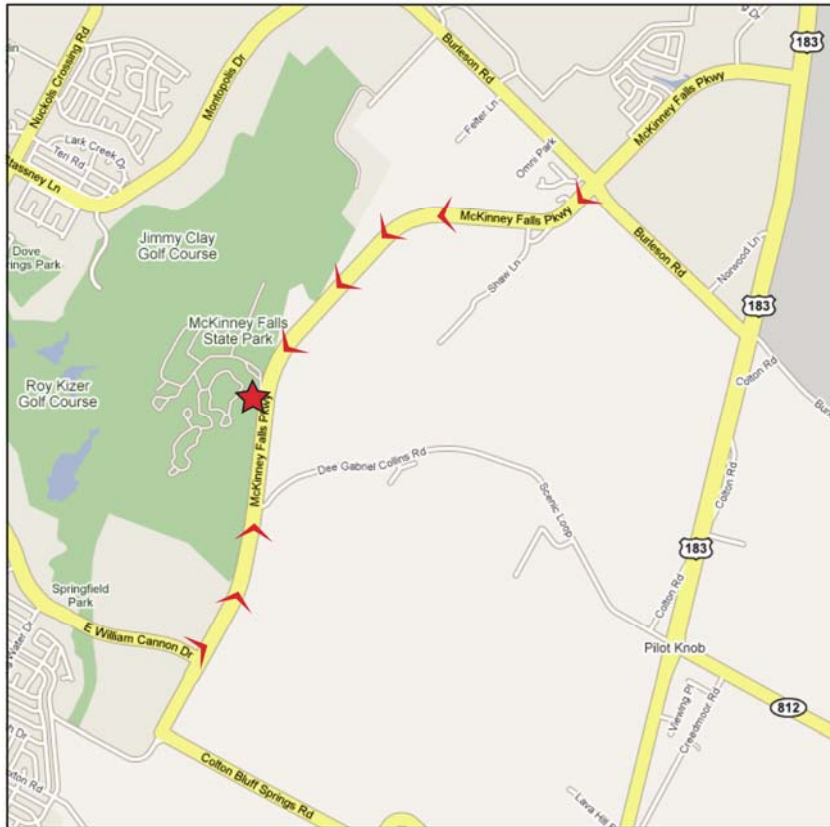
Travel south on the IH35 access road past Oltorf Street. St. Edwards drive is the first street on the right, after Oltorf. Drive a short ways on St. Edwards Drive to the sign indicating the entrance to Blunn Creek Preserve (on the north side of the road).

Swim: *Little Stacy Park, 1400 Alameda Dr.*

From the Blunn Creek Nature Preserve, travel west on St. Edwards Drive to East Side Drive. Turn right. Travel through the light at Oltorf, the stop sign at Live Oak, the stop sign at Annie, and the stop sign at Monroe. The park will be on the corner of East Side Drive and Sunset Ln.

WEAR HIKING CLOTHES. IF YOU WOULD LIKE TO SWIM AT STACY POOL (free City pool) AFTER CLEAN CREEK CAMP, BRING YOUR BATHING SUIT AND LUNCHES.

Day 2: McKinney Falls State Park, 5808 McKinney Falls Parkway



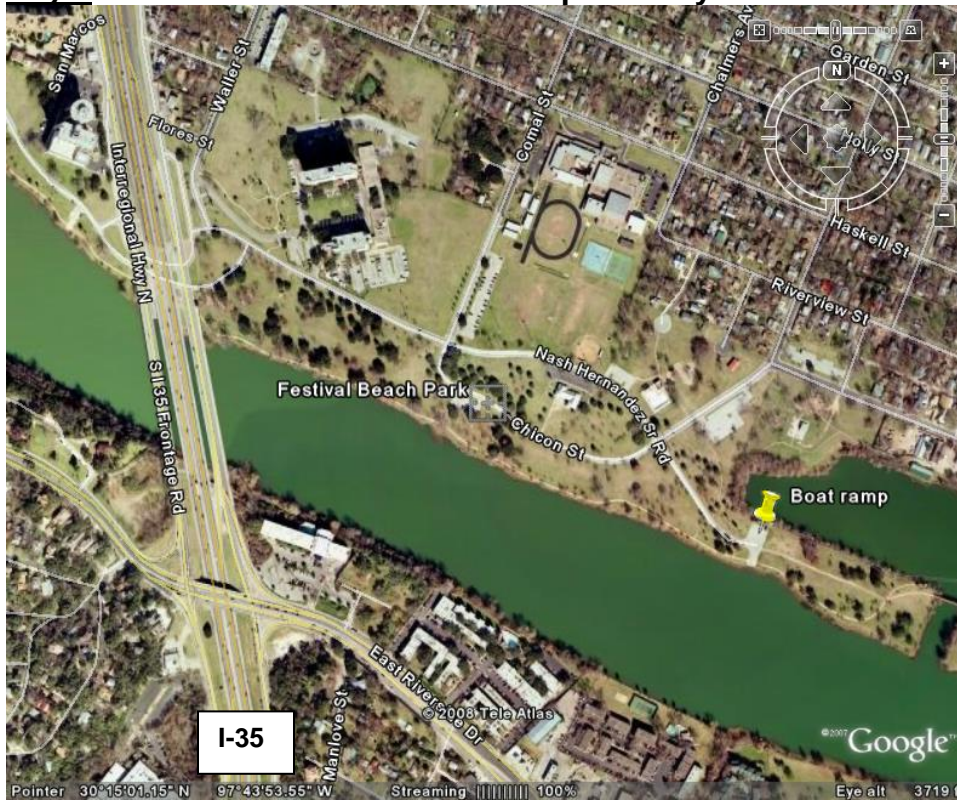
Option 1: Travel on Hwy 183 south of Ben White (near Hwy 71 and the airport). Turn right on McKinney Falls Parkway. Travel past the light on Burleson. The entrance to McKinney Falls State Park is located a mile or two down the road on the right.

Option 2: From IH35, travel east on William Cannon. William Cannon will dead-end into McKinney Falls Parkway. Turn left. The entrance to the park will be a mile or two down the road on the left.

- Register for Clean Creek Camp at the Ranger Station at the entrance.
- The first right past the entrance is the road to Lower McKinney Falls. Park at the end of the drive for the morning activity.

WEAR WATER SHOES. IF YOU WOULD LIKE TO SWIM AFTERWARDS, WEAR YOUR BATHING SUIT AND BRING A TOWEL.

Day 3 Festival Beach Park Boat Ramp on Lady Bird Lake



Directions:

From IH35: Exit Riverside and get on the I-35 access Rd on the east side of the highway. After crossing the lake, take the first right onto Nash Hernandez Sr Rd. Follow the road and park near the intersection of Nash Hernandez and Chicon St. Walk east to the boat ramp.

WEAR OLD CLOTHES AND CLOSE-TOED SHOES OR WATER SHOES, BRING LIFE VESTS IF YOU HAVE THEM

Day 4: Green Classroom at Becker Elementary, 906 W. Milton

From IH35: Go west on Riverside. Turn left on Barton Springs Rd. Pass through the light at 1st street. At the second light, turn south (left) on Bouldin Avenue. Travel a few blocks to W. Milton. Turn right. The Green Classroom is located on the corner of Bouldin and W. Milton (a small house located across the street from Becker Elementary).

From Mopac: Take the Bee Cave/Rollingwood Exit. Get on the northbound access road to Mopac. The northbound access road to Mopac curves west and becomes Barton Springs Road. Travel past Lamar to the first light at Bouldin Avenue. Turn south (right) on Bouldin and travel a few blocks to W. Milton. Turn right. The Green Classroom is located on the corner of Bouldin and W. Milton (a small house located across the street from Becker Elementary).

WEAR GARDENING APPROPRIATE CLOTHING